

**AVEL**<sup>®</sup>

# WATERPROOF IN-WALL TVS



Innovative solution  
for home and business

**2023**

[www.aviselectronics.tech](http://www.aviselectronics.tech)



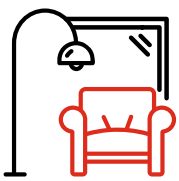
# AVEL BUILT-IN TVS

The first Waterproof TV series was presented by AVEL in 2012 and immediately attracted attention of customers by its high quality and original design. In the following years, our company has repeatedly updated built-in TVs in accordance with modern trends and technology development, also considering the opinion of customers. Now the range includes TVs of standard sizes and exclusive models for the implementation of bespoke projects.

AVEL TVs are assembled on our own production line in China. Our products are handcrafted and it is professional and stable process with quality control procedures applied at all the stages.

## APPLICATIONS

---



Living rooms



Kitchens



Bathrooms



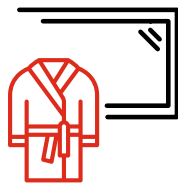
Saunas and pools



Yachts and boats



Fireplace TV



Hotels



Beauty salons

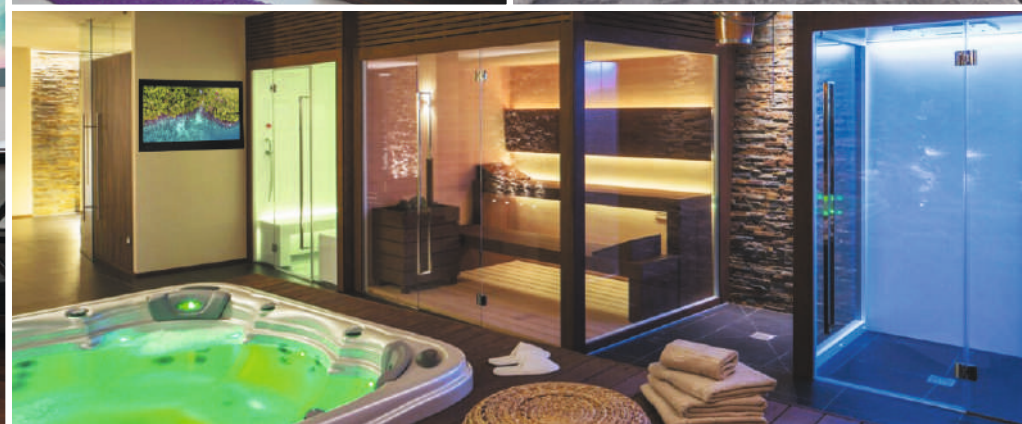


Business solutions

# IMPORTANT ELEMENT OF ANY INTERIOR

AVEL built-in TVs are protected from water ingress, it is confirmed by IPX4 certificate. Therefore, you can use our TVs both in the bedroom or living room, and in the kitchen or dining room. Also, TVs can be installed in rooms that are characterized not only by high humidity, but also by high temperature: bathrooms and even saunas. The location of the TV directly above the fireplace is also acceptable, because it has a metal case and an optimized heat dissipation design.

In addition to houses, mirror TVs are often installed in pools, beauty salons, hotel lobbies and many other commercial premises for the purpose of broadcasting entertainment and advertising materials.





# STANDARD SIZE TVS



## Tempered glass

Tempered glass is used in the production, which is characterized by increased strength and safety in case of accidental destruction.



## Waterproof TV structure

Built-in TV is protected from water according to the IPx4 standard; it can be used in wet areas such as bathroom, pool, jacuzzi, etc.



## Waterproof remote control

The remote control can be used with wet hands and washed under the tap.



## Integrated vibration speakers

Vibration speakers reproduce high-quality sound through the glass, while there are no holes on the front surface.



## Android TV

The TV runs on Android OS, which allows you to go online, download apps from Google Play.



## High Temperature Resistance

Our In-Wall TVs were tested in a laboratory stove and also in real Saunas, they can work stable at temperatures up to 80 Celcius (176 Fahrenheit).



## Ultra Bright Screen

The use of such a screen provides a bright picture for a mirror TV.



## Easy to wash

The TV does not require special care; it can be washed like a regular mirror.



## Full HD/ 4K IPS LED

The matrix is made using IPS technology and provides wide viewing angles. Thanks to this, you can enjoy a high-resolution image.



## TV system

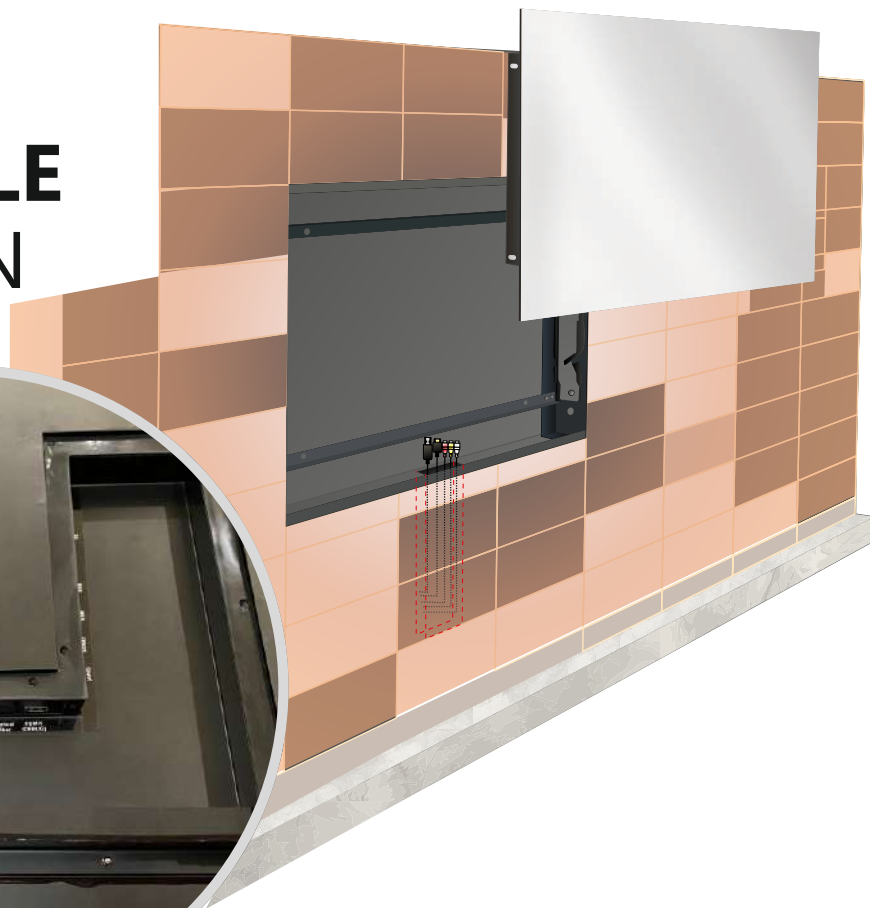
The TV is equipped with built-in digital and analogue tuners, and you can also watch videos from a USB flash drive or HDD.



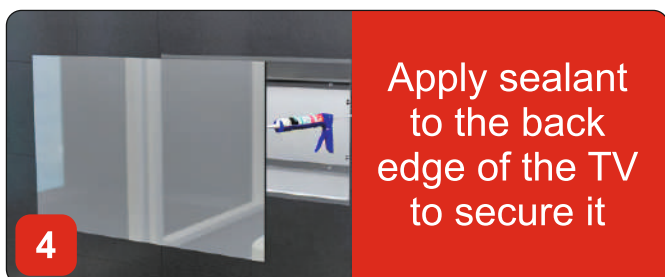
## 2 years warranty

We provide a two-year warranty for each AVEL TV.

# EASY AND RELIABLE INSTALLATION



AVEL TVs are built into a prepared niche in the wall using a special installation frame included in the package.



## COLOR OPTIONS

---



Mirror



Black



White

---

## ADVANTAGES

- 2 internal vibration speakers
- Moisture protection - Full IPx4
- Smart TV: built-in or connected set-top box
- Ports and connectors: HDMIx2, USBx2, TVx2 (analogue and DVB-T2), Composite, CI+, IR control (to manage external devices)
- IR connector for connecting an IR receiver or integrating with other devices
- Built-in media player
- Analogue and digital TV tuners
- Waterproof remote control



# SPECIFICATIONS AND DIMENSIONS

You will definitely find the right TV for your project. Depending on the size of the room, you can choose a screen diagonal from 22 to 75 inches.

MODEL	DIMENSIONS	SPECIFICATIONS
<b>AVS240SM</b>		<b>Screen resolution:</b> 1920x1080 <b>Brightness:</b> 700cd/m <sup>2</sup> for Mirror (250cd/m <sup>2</sup> for B/W frame) <b>Installation dimensions:</b> 633x430x55mm
<b>AVS320SM</b>		<b>Screen resolution:</b> 1920x1080 <b>Brightness:</b> 800cd/m <sup>2</sup> for Mirror (350cd/m <sup>2</sup> for B/W frame) <b>Installation dimensions:</b> 807x568x57mm
<b>AVS430SM</b>		<b>Screen resolution:</b> 3840x2160 (4K) <b>Brightness:</b> 700cd/m <sup>2</sup> <b>Installation dimensions:</b> 1049x732x73mm
<b>AVS550SM</b>		<b>Screen resolution:</b> 3840x2160 (4K) <b>Brightness:</b> 650cd/m <sup>2</sup> <b>Installation dimensions:</b> 1309x868x81mm
<b>AVS650SM</b>		<b>Screen resolution:</b> 3840x2160 (4K) <b>Brightness:</b> 650cd/m <sup>2</sup> <b>Installation dimensions:</b> 1540x992x83mm
<b>AVS750SM</b>		<b>Screen resolution:</b> 3840x2160 (4K) <b>Brightness:</b> 500cd/m <sup>2</sup> <b>Installation dimensions:</b> 1773x1127x83mm

## Vanity Mirror TV, AVS220BT (21.5" LED Magic Mirror On-Wall Smart TV)

DIMENSIONS: 650x850x34,5 mm



The mirror TV AVS220BT is specially designed for hanging installation, its case depth is 34.5 mm. You don't have to prepare a recess in the wall, and this is convenient when the repair in the room has already been completed.

The wall-mounted TV has a fairly thin body, 21.5-inch IPS screen, internal speakers, built-in TV tuner and runs on Android OS. All this will allow you to enjoy your favorite TV shows and movies in excellent quality.

## Smart TVs for installation behind a mirror

### AVS2200F

DEVICE DIMENSIONS: **596x596x29,5 mm**



### AVS2700F

DEVICE DIMENSIONS: **710x652x29,5 mm**



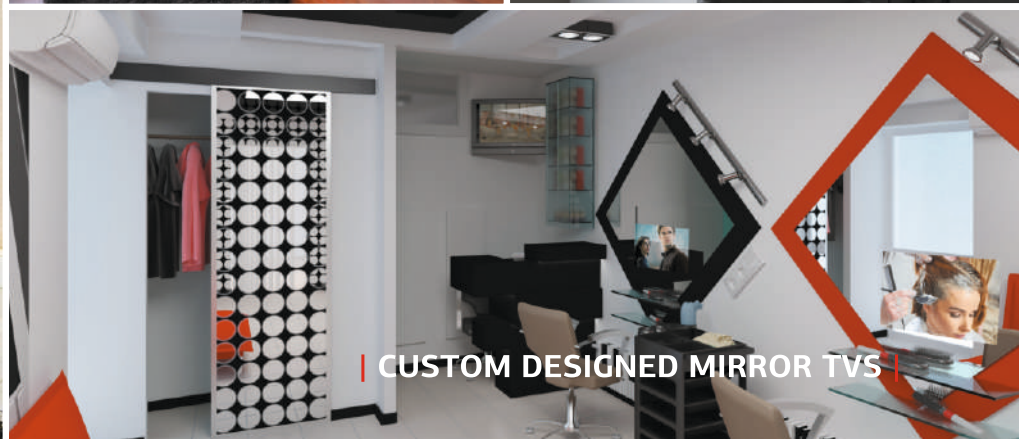
TVs behind the mirror AVS2200F and AVS2700F have a thin case and are designed specifically for hanging installation. Thus, you will not need to perform additional work on the preparation of the niche, and the tile on the wall will remain intact. You can place the TV behind a large mirror: such a device will look great both in the home interior and in commercial premises, where it can become a tool for advertising your business.

The arrangement of the board and the matrix in the same plane made it possible to minimize the thickness of the case of the wall-mounted TV. The models are equipped with IPS 21,5 and 27-inch screens, a built-in digital TV tuner and run on Android OS. All this will allow you to enjoy your favorite TV shows and movies in excellent quality.

# CUSTOM DESIGNED MIRROR TVS

If you have a creative project and want to transform your interior with unusual mirror elements, choose a mirror TV with an individual design. We will help you realize all your ideas and make a TV in a specific size and shape, just for you.

This option also gives a unique opportunity for business owners who will receive a modern and non-standard tool for displaying information and entertainment videos.





MODEL	DIMENSIONS	SPECIFICATIONS
AVS220OF		<b>Screen resolution:</b> 1920x1080 <b>Brightness:</b> 1000cd/m <sup>2</sup> <b>Device dimensions:</b> 596x596x29,5mm
AVS270OF		<b>Screen resolution:</b> 1920x1080 <b>Brightness:</b> 1000cd/m <sup>2</sup> <b>Device dimensions:</b> 710x652x29,5mm
AVS240SM- Open frame		<b>Screen resolution:</b> 1920x1080 <b>Brightness:</b> 700cd/m <sup>2</sup> <b>Installation dimensions:</b> 633x430x55mm
AVS270SM- Open frame		<b>Screen resolution:</b> 1920x1080 <b>Brightness:</b> 1000cd/m <sup>2</sup> <b>Installation dimensions:</b> 700x483x66mm
AVS320SM- Open frame		<b>Screen resolution:</b> 1920x1080 <b>Brightness:</b> 800cd/m <sup>2</sup> <b>Installation dimensions:</b> 807x568x57mm
AVS430SM- Open frame		<b>Screen resolution:</b> 3840x2160 (4K) <b>Brightness:</b> 700cd/m <sup>2</sup> <b>Installation dimensions:</b> 1049x732x73mm
AVS550SM- Open frame		<b>Screen resolution:</b> 3840x2160 (4K) <b>Brightness:</b> 650cd/m <sup>2</sup> <b>Installation dimensions:</b> 1309x868x81mm
AVS650SM- Open frame		<b>Screen resolution:</b> 3840x2160 (4K) <b>Brightness:</b> 650cd/m <sup>2</sup> <b>Installation dimensions:</b> 1540x992x83mm
AVS750SM- Open frame		<b>Screen resolution:</b> 3840x2160 (4K) <b>Brightness:</b> 500cd/m <sup>2</sup> <b>Installation dimensions:</b> 1773x1127x83mm

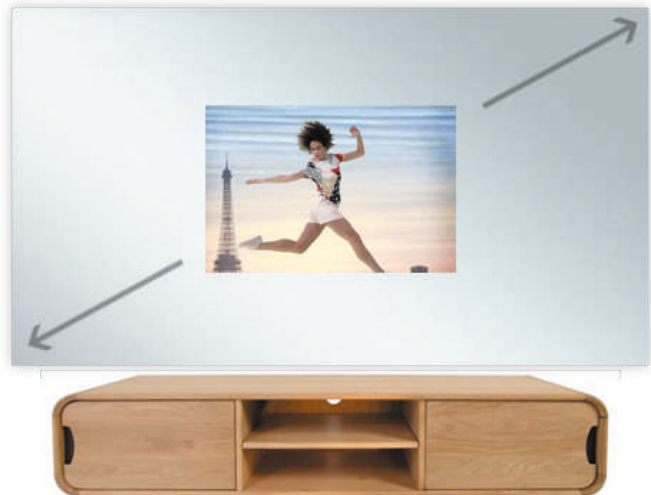
## ANY SHAPE OF YOUR MIRROR



Feel free to choose your mirror TV! We will follow your wishes, and the bespoke mirror glass TV will take on an exclusive shape. You can create a memorable interior that reflects your personality.

## ANY MIRROR SIZE

Now we are ready to produce for you Mirror TVs with screen sizes from 24 to 75 inches. Such a wide range of sizes helps to meet all the requirements and create a unique product that will delight you for many years.



Wherever you plan to place a custom framed mirror TV (in a cozy bedroom, a spacious living room or in commercial premises for advertising), you can select the screen size that will be optimal for your case.

# FRAMED DESIGN AND LED BACKLIGHT



## REGULAR BRIGHT SCREEN

**250 - 500 cd/m<sup>2</sup>**

(depending on the screen diagonal)

This type of screen is perfect for TVs with white or black frames. The brightness will be enough to comfortably watch movies and TV shows from anywhere in the room.

## ULTRA BRIGHT SCREEN

**700 - 1000 cd/m<sup>2</sup>**

(depending on the screen diagonal)

For mirror TVs, an ultra bright matrix is used. This provides a better image with the typical transmission and reflection parameters that are specific to the mirror.



[www.aviselectronics.tech](http://www.aviselectronics.tech)

Production Site **and Office in China:** 506-507A,  
HuiGu ChuangXin Technology park, JingBei road,  
Shiyan town, Baoan district, Shenzhen,  
Guangdong, China, 518108  
+86 (186) 66660854  
[sales@aviselectronics.com](mailto:sales@aviselectronics.com)